

LONDON


HARBOR

EMPATHY IN EVERY STRIDE.
EXPERTISE IN EVERY SOLUTION.



Harbor: The most discreet residential mental health treatment, in the heart of London.

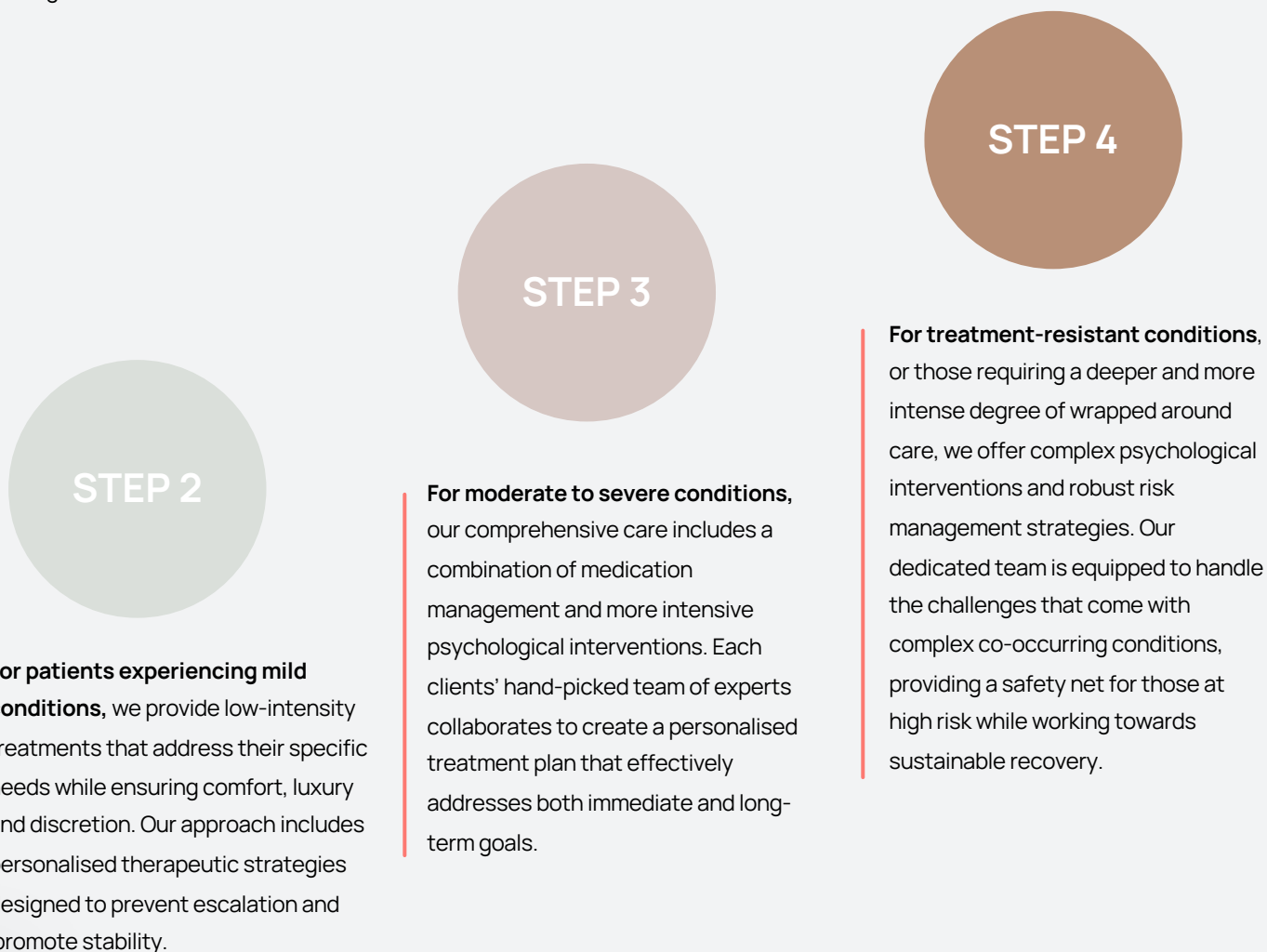
At Harbor, we provide utterly discreet, luxurious addiction rehabilitation, mental health treatment, and support for discerning individuals managing neurodiversity diagnoses. We also have a deep understanding of the complex interplay between addiction, mental health, and neurodiversity – allowing us to expertly handle even the most intricate patient cases with the highest standard of care.



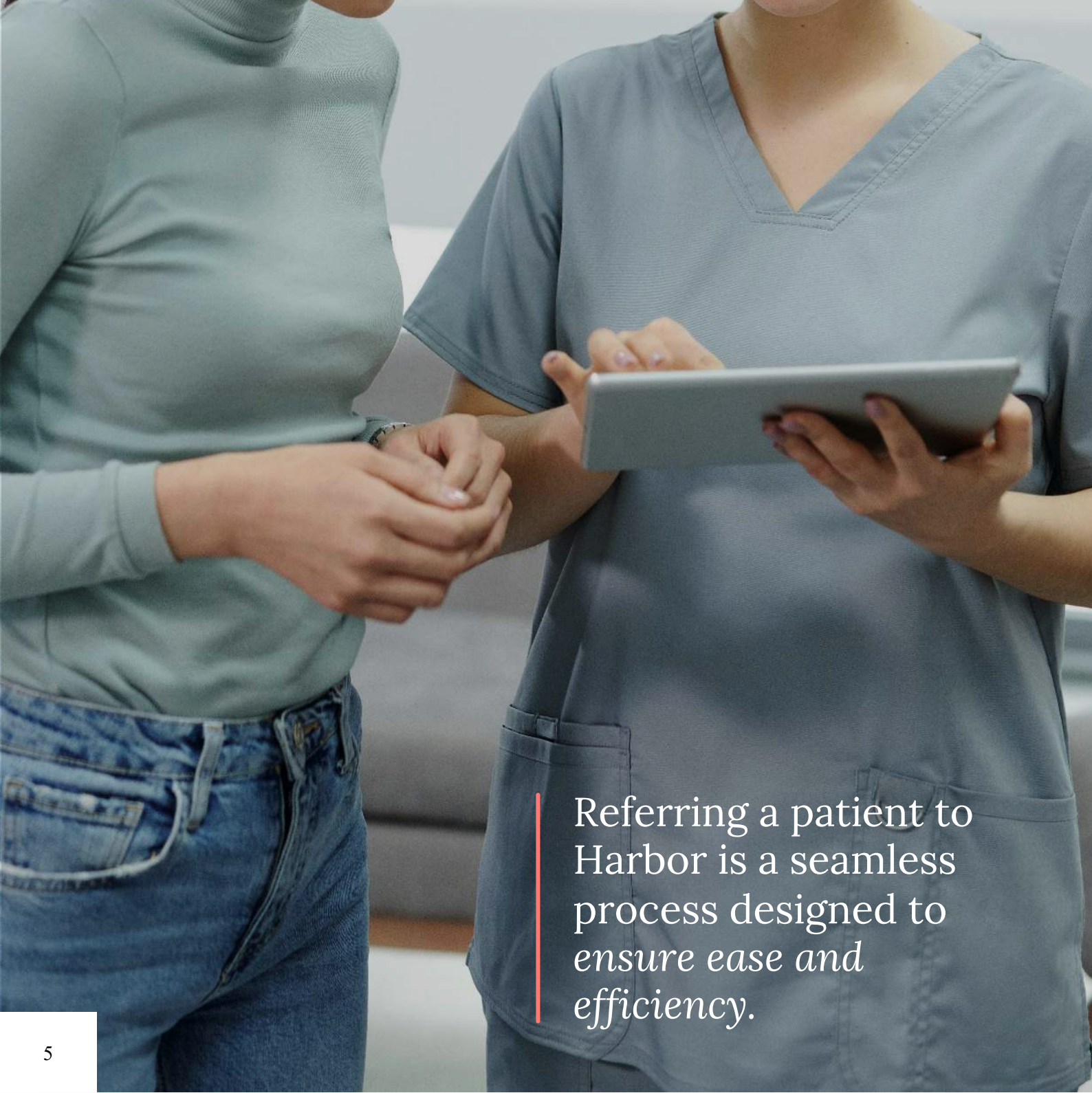
The UK's pioneer of the one-patient-at-a-time therapeutic model; delivering *curated care for every challenge*, specifically designed to seamlessly integrate with your practice.

Our place in the stepped care model pathway

We operate within **levels 2-4** of the stepped care model, offering tailored interventions for various stages of mental health treatment and addiction rehabilitation:



Whether your patient is moving up from an initial GP assessment or down from intensive inpatient care, our flexible approach ensures that treatment intensity can be adjusted. With patient consent, we can also share care responsibilities with you to provide supplementary support from initial intervention to post-recovery reintegration.



Referring a patient to Harbor is a seamless process designed to ensure ease and efficiency.

How to refer a patient

At Harbor, we understand the importance of a seamless and personalised referral process. When you choose to refer your patients to us, you are not just submitting a form; you are initiating a conversation with our dedicated leaders in clinical and medical care. When you choose to refer your patients into our care, you will be contacted directly by either our clinical director or medical director – highly experienced professionals who are committed to providing the utmost care and attention to each case.

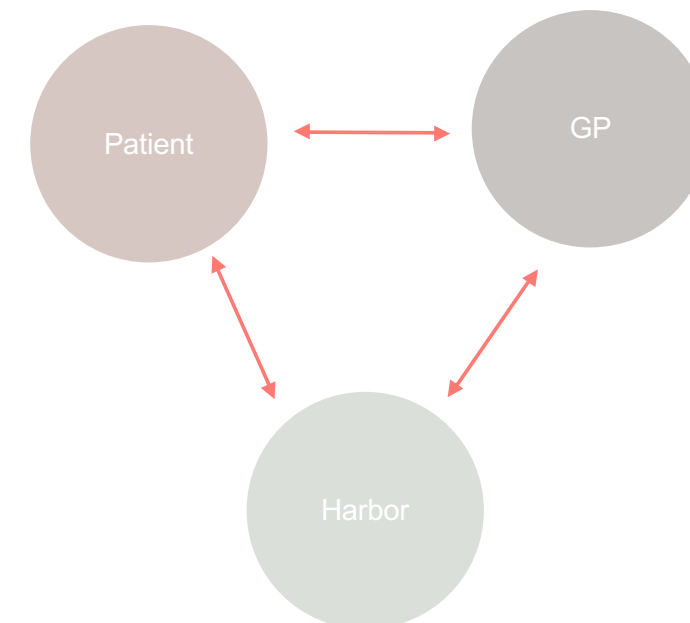
To start this conversation, simply visit our website and fill in the contact form and either our CEO, clinical director or medical director will personally reach out to discuss your patient's needs, gather necessary information, and coordinate the next steps.

Reintegrating patients back to your care

Once your patient is ready to transition back to your full-time oversight Harbor's collaborative approach ensures a smooth and transparent handover at any stage of their recovery journey. Assuming we have patient consent, we will provide a detailed summary of progress, ongoing needs, and any recommended follow-up care. Our open line of communication ensures that you are always informed and fully prepared to continue providing exceptional care without any surprises.

Keeping you informed

We believe in transparent and regular communication, keeping you informed about your patient's journey with us. You will receive consistent updates on their progress, including detailed reports on their treatment, milestones achieved, and any adjustments to their care plan. This ensures that you are always in the loop, if that is what you prefer, and can seamlessly integrate our insights into your continued care for the patient.





Supporting your pathway to care

At Harbor, we are dedicated to supporting your patient outcomes. Our flexible and collaborative approach allows us to tailor our services to complement your existing care pathways. Whether your patient needs clinically intensive, residential treatment or supplementary therapeutic support, we work closely with you to ensure our treatment plans align with your overarching care strategy.

Enhancing patient outcomes and fostering long-term recovery.

Flexibility to meet any need

Whether you want us to take over the full care of your patient or simply provide additional support, our approach can be as intensive or as supplementary as required. This ensures that your patients receive the personalised care they need, and that you can maintain as much oversight and involvement as you want.

We are skilled in adapting our wrapped around, *utterly curated therapeutic services* to meet the needs of both you and your patients.

Cultural awareness

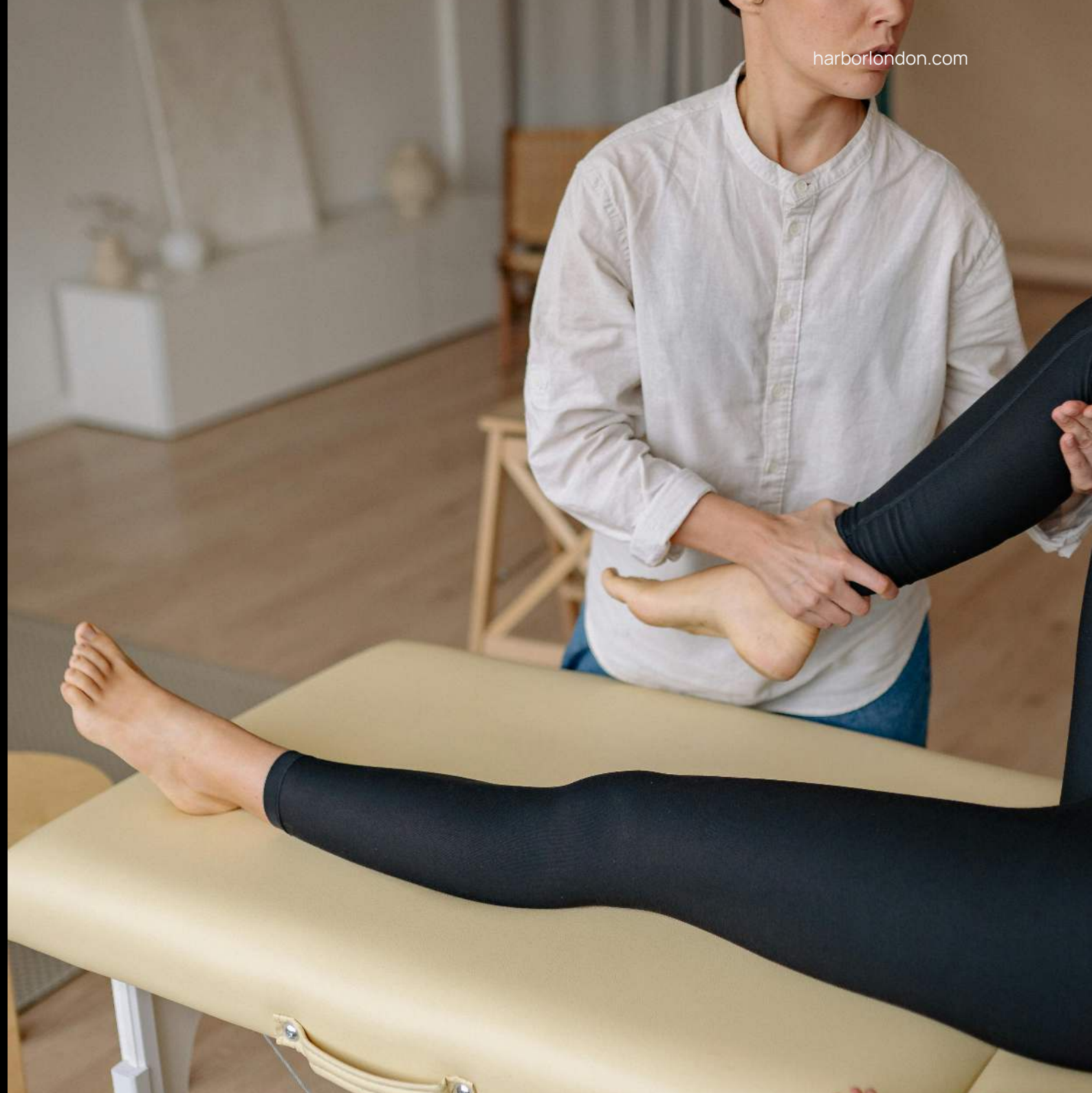
We bring a wealth of cultural awareness and knowledge to the luxury mental health treatment and addiction rehabilitation field. With native Arabic speakers, we understand the unique cultural sensitivities and nuances required to provide compassionate and effective care. Under our clinical team's guidance and expertise, we ensure that every patient - regardless of race and religion - receives the highest standard of culturally competent care.



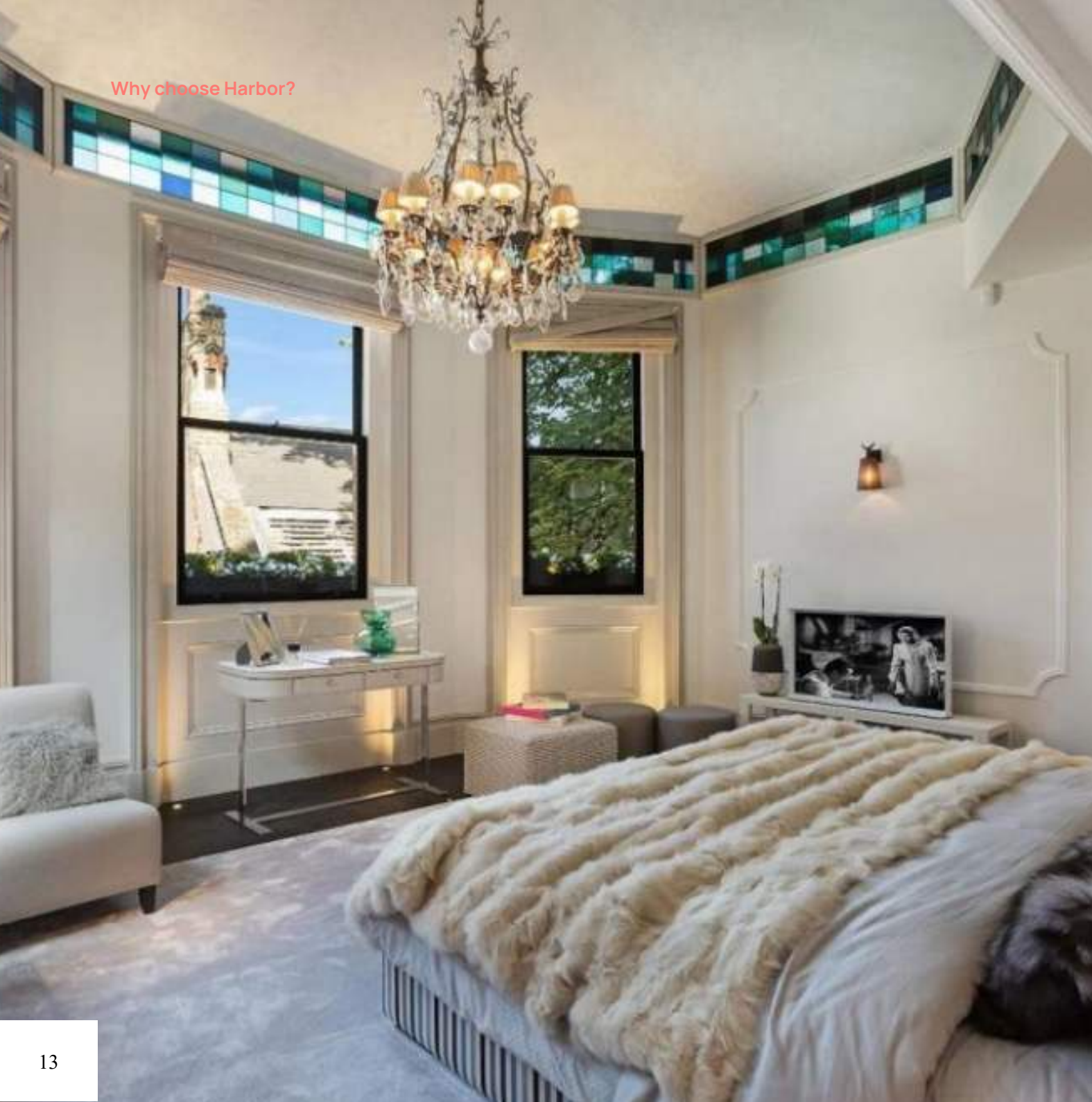
Why choose Harbor?

24/7, expert care: Access to some of the world's leading medical experts.

harborlondon.com



Why choose Harbor?



Luxury environment:
Treatment in a *discreet,*
luxurious setting.

Tailored treatment:
*Curated care plans that
evolve with the
patient's needs.*





Open communication:
Regular *updates and*
collaboration with referring
professionals.

Why choose Harbor?

Comprehensive support:
From initial intervention to
ongoing recovery.



Discover more

About us

Explore our new website to learn more about how Harbor can support you in referring your high-profile patients in need of utter discretion in mental health treatment and addiction rehabilitation.

Together, we can help those you care about receive the clinical support they need to live happier, more fulfilling lives.

To find out more about our team, simply visit www.harborlondon.com/our-team or scan the QR code.



Contact us

For more information or to make a referral, visit our website or contact us directly.

www.harborlondon.com

For referrals, admissions, consultations and general enquiries, contact :

Paul Flynn

T: +44 (0)20 3709 3967

M: +44 (0)7970 941 393

E: Paul.Flynn@harborlondon.com

We look forward to fostering a smooth, flexible, professional relationship free of worry and stress.

Because everything we do, is centred around you.

HARBOR